

China's Industrial Finance Development

Index

CIFDI

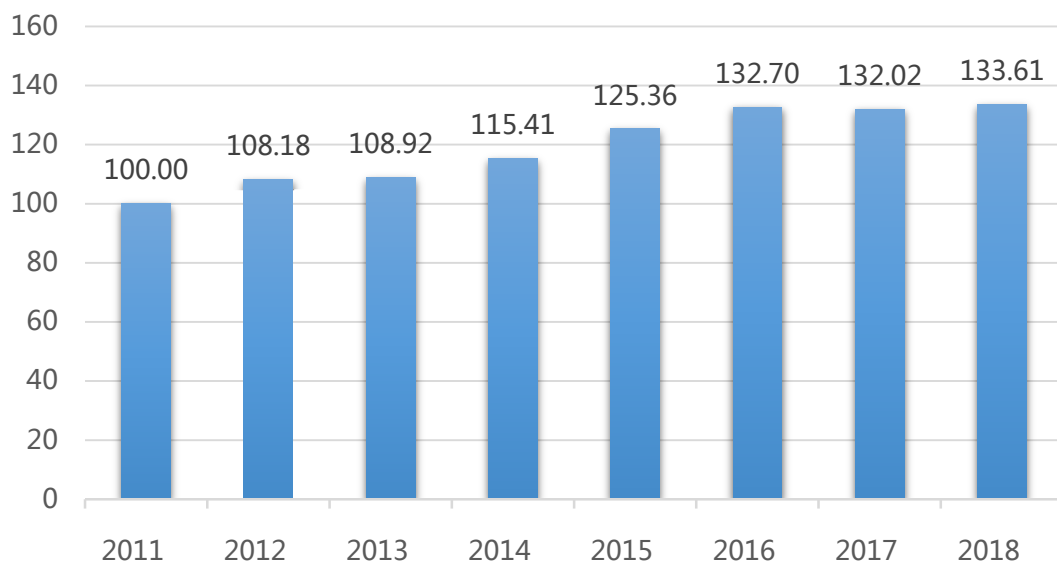
2017

1.1

1.1.1CIFDI

		M2/GDP
		M2 /GDP
		/GDP
		/GDP
		/GDP
		/GDP
		/GDP

		/	
		/	
		/	
		/	
		/GDP	
		/GDP	
			/GDP
			/GDP
		/GDP	
		/GDP	
		/GDP	
		/GDP	



1.1.1

2011-2018 ¹

1.2

"

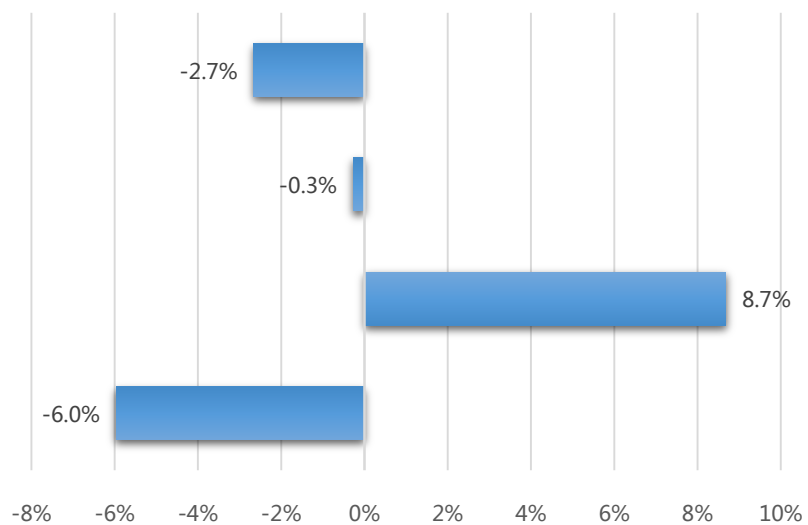
"

CIFDI

1.2.1

CIFDI

¹



1.2.1

CIFDI

3.86

8.7%

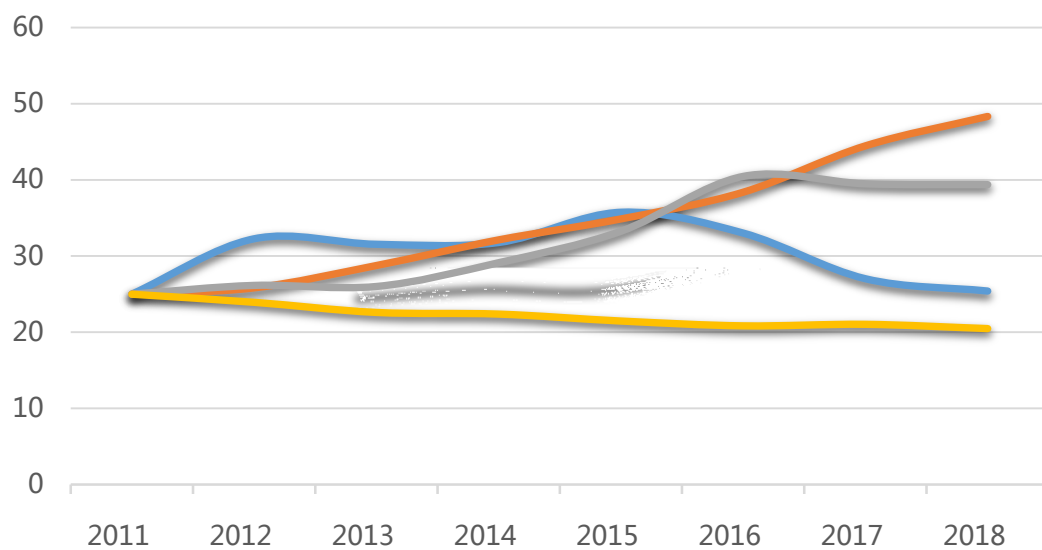
CIFDI

CIFDI

6%

CIFDI

2.7%



1.2.2

2011-2018

1.2.2

2011

93%

9.9%

2015

2011

1.3

CIFDI

CIFDI

38 12 R 0.8 14

 R 0.5-0.8 12 R

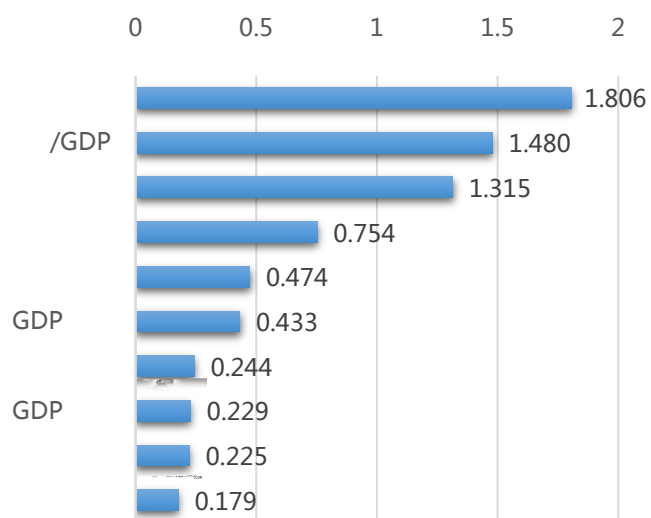
0.5 20

1.3.1

20

		R
1	/GDP	0.983
2	/GDP	0.965
3	M2/GDP	0.952
4	/GDP	0.938
5	/GDP	0.920
6		0.916
7		0.915
8		0.906
9		0.897
10	/GDP	0.895
11		0.884
12		0.854

13



1.3.1

10

CIFDI

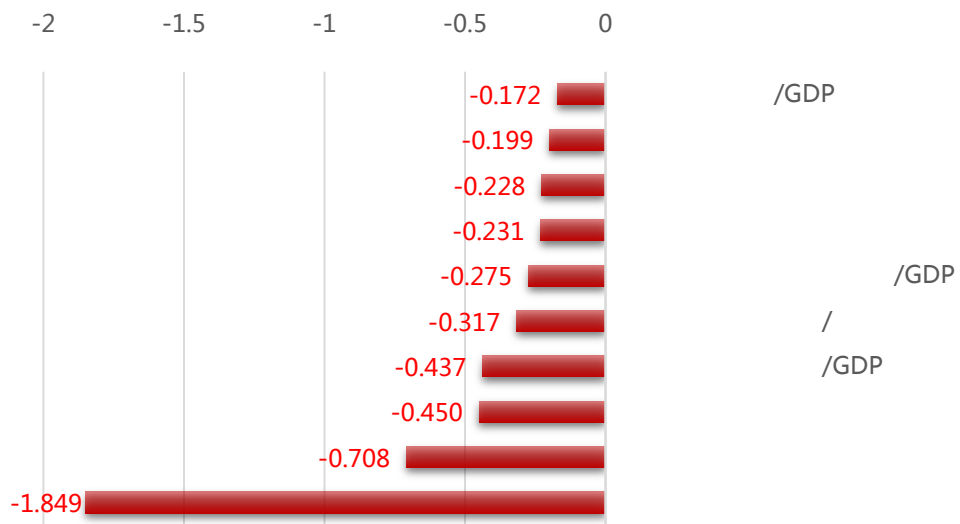
38

16

22

1.806 1.315

114% 83%



1.3.3

10

2018

IPO

60%